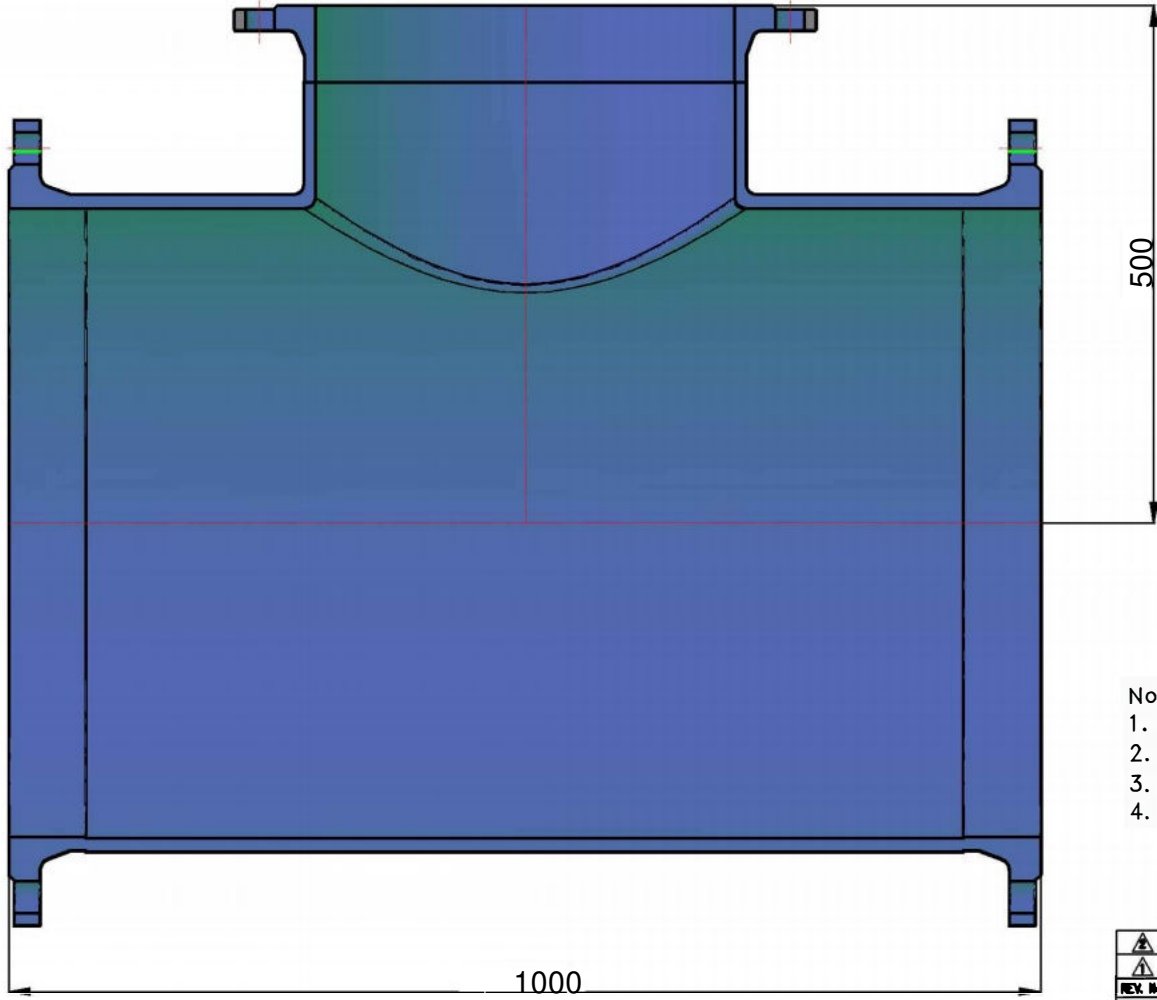


REV.   
 DWG No.



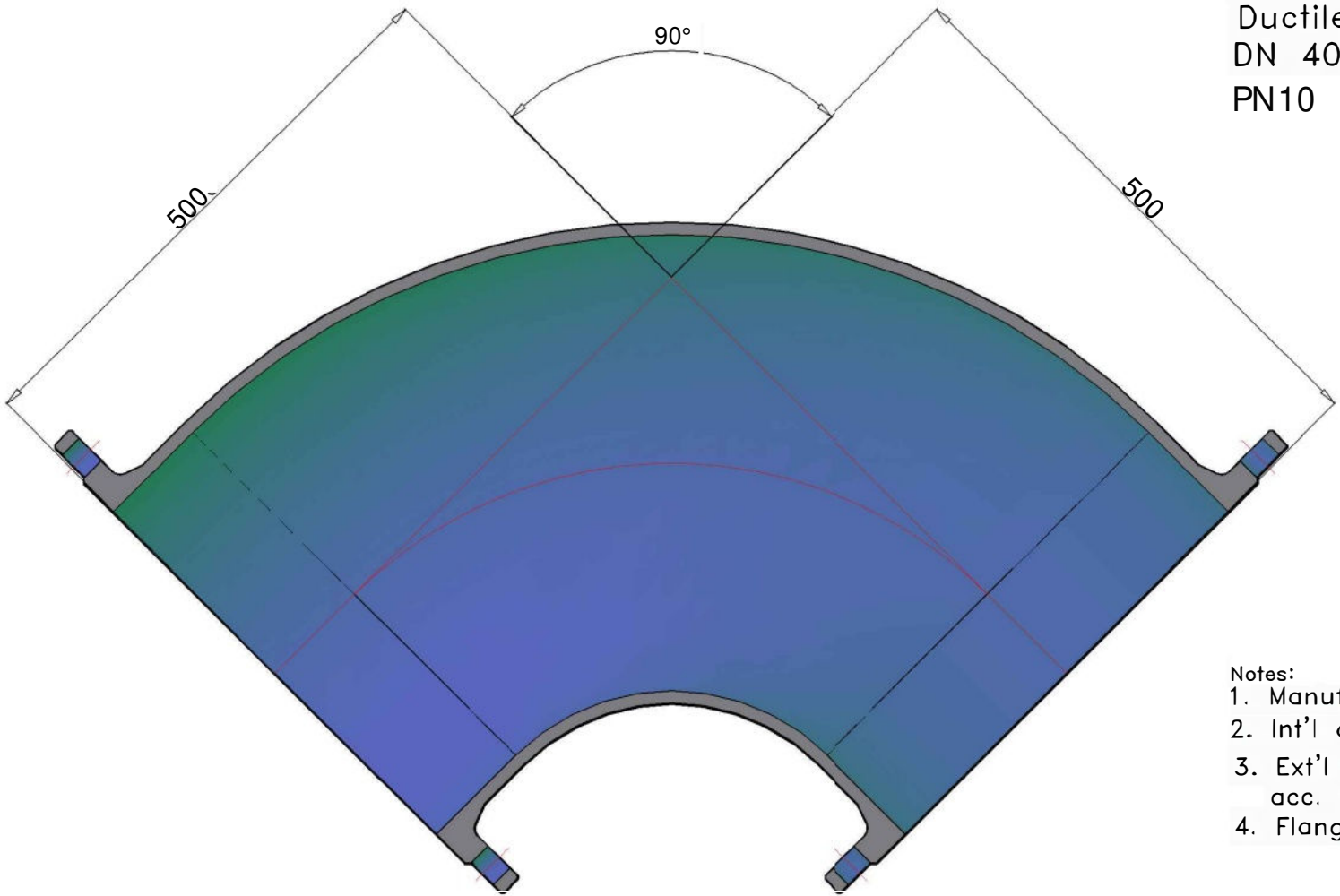
Double Fixed Flanged Tee  
 Ductile Iron  
 DN 600 x 400  
 PN10

Notes:





1. Manufactured acc. to SO 2531;
2. int'l cement lining as per ISO 4179;
3. Ext'l rich-Zinc plus bitumen as per SO 8179;
4. Flange to EN 1092-2 PN10;

REV. No.	DESCRIPTION			DATE	DRA'G BY	CHK'D BY	APP'D BY
	GENERAL TOLERANCE			APP'D	SCALE	QTY	AS (1/8x207)
SIZE	MACH	MFG	REU	CHK'D	DATE		
0.5-6	±0.1	±0.5		DES'N	UNITS	mm	PROJECT
6-30	±0.2	±0.8		DRA'G	CLIENT		TITLE
30-120	±0.3	±1.0		<b>QINGDAO JUDBERD MACHINERY CO.,LTD</b>			
120-315	±0.5	±1.1					
315-1000	±0.8	±2.0					
1000-2000	±1.2	±3.0					
						DWG. No.	

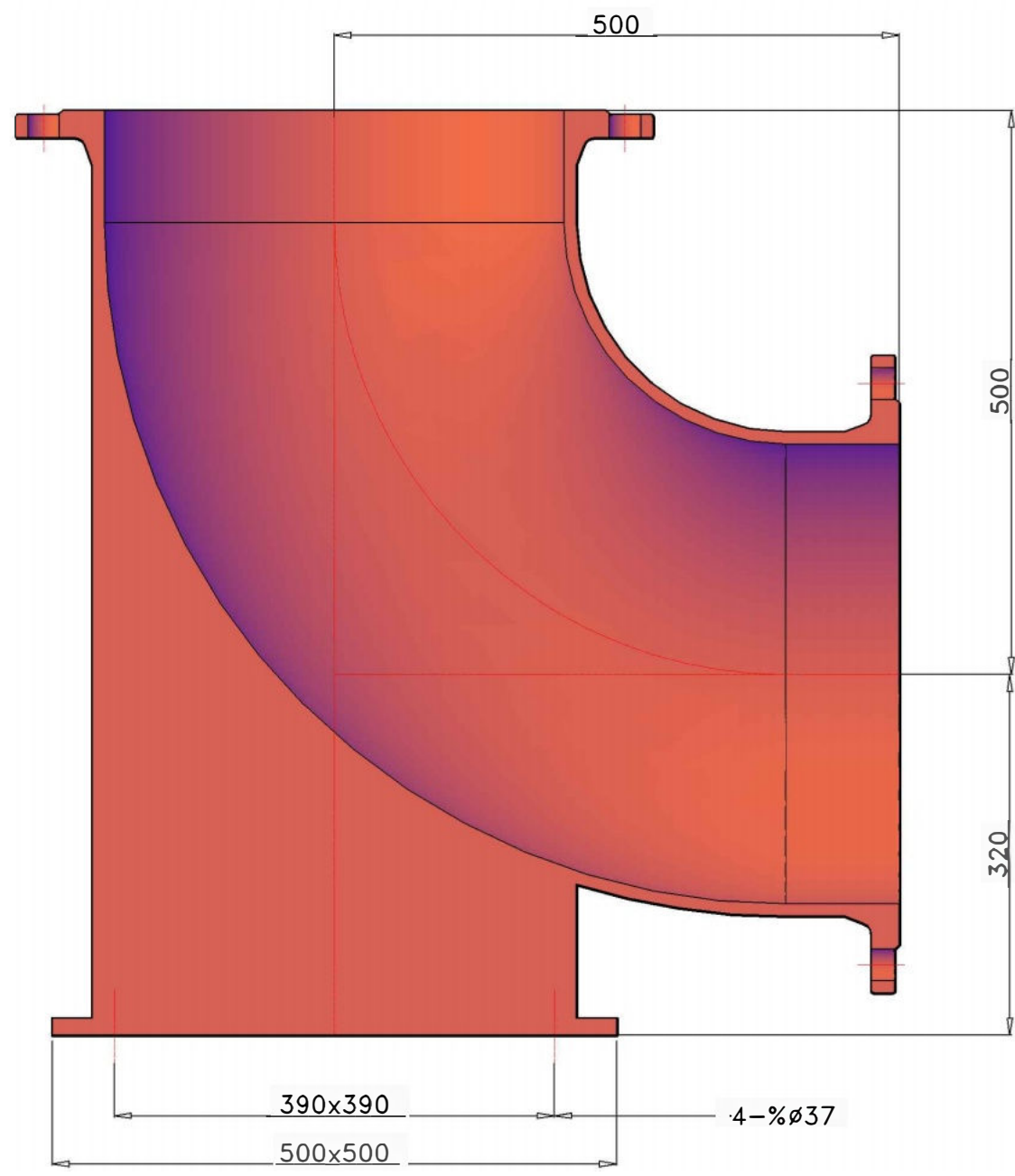
Double Fixed Flanged Bend  
 Ductile Iron  
 DN 400 x 90deg  
 PN10



- Notes:
1. Manufactured acc. to SO 2531;
  2. Int'l cement lining as per SO 4179;
  3. Ext'l rich-Zinc plus bitumen acc. to ISO 8179;
  4. Flange to EN 1092-2 PN10;

								
								
REV. No.	DESCRIPTION			DATE	DRA'G BY	CHK'D BY	APP'D BY	
GENERAL TOLERANCE		APP'D	SCALE		QTY	 	AJ (420/217)	
SIZE	MACHING	FINISH	CHK'D	DATE	PROJECT			
0.5-6	±0.1	±0.5	DES'N	UNITS	mm	TITLE		
6-30	±0.2	±0.8	DRA'G	CLIENT				
30-120	±0.3	±1.0	QINGDAO JUDBERD MACHINERY CO.,LTD					DWG. No.
120-300	±0.5	±1.5						
300-600	±1.0	±2.0						
600-2000	±1.2	±3.0						

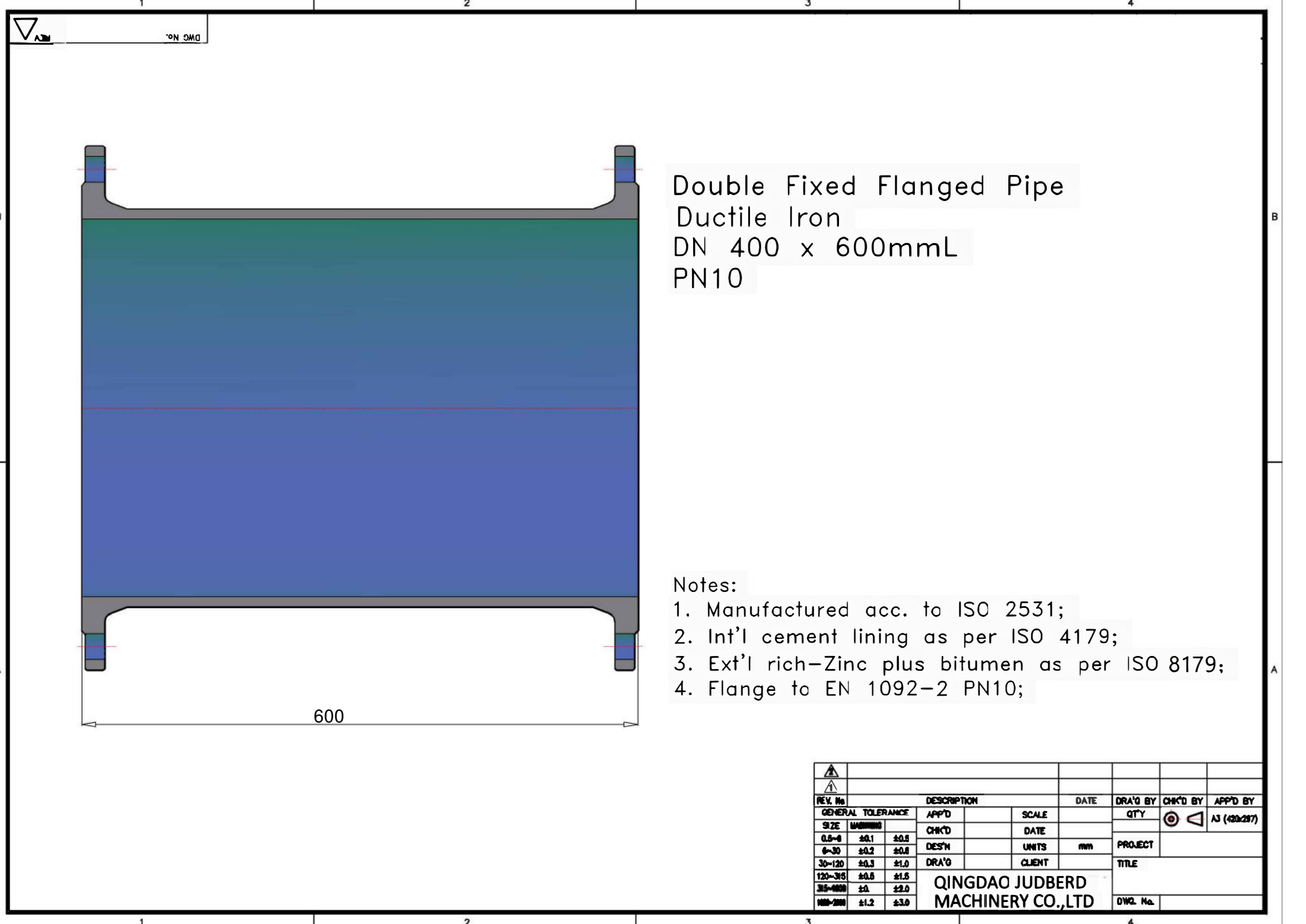
REV. Dwg No.



Double Fixed Flanged Bend  
with Duckfoot  
Ductile Iron  
DN 400 x 90deg  
PN10

- Notes:
1. Manufactured acc. to ISO 2531;
  2. Int'l cement lining as per ISC 4179;
  3. Ext'l rich-Zinc plus bitumen acc. to ISO 8179;
  4. Flange to EN 1092-2 PN10;

REV. No.		DESCRIPTION			DATE	DRA'G BY	CHK'D BY	APP'D BY
GENERAL TOLERANCE		APP'D	SCALE		QTY	⊙	△	A3 (420/297)
SIZE	TOLERANCE	CHK'D	DATE					
0.5-0	±0.1 ±0.5	DES'N	UNITS	mm	PROJECT		TITLE	
0-30	±0.2 ±0.8	DRA'G	CLIENT		QINGDAO JUDBERD MACHINERY CO.,LTD Dwg. No.			
30-120	±0.3 ±1.0							
120-315	±0.5 ±1.5							
315-1000	±0.8 ±2.0							
1000-2000	±1.2 ±3.0							

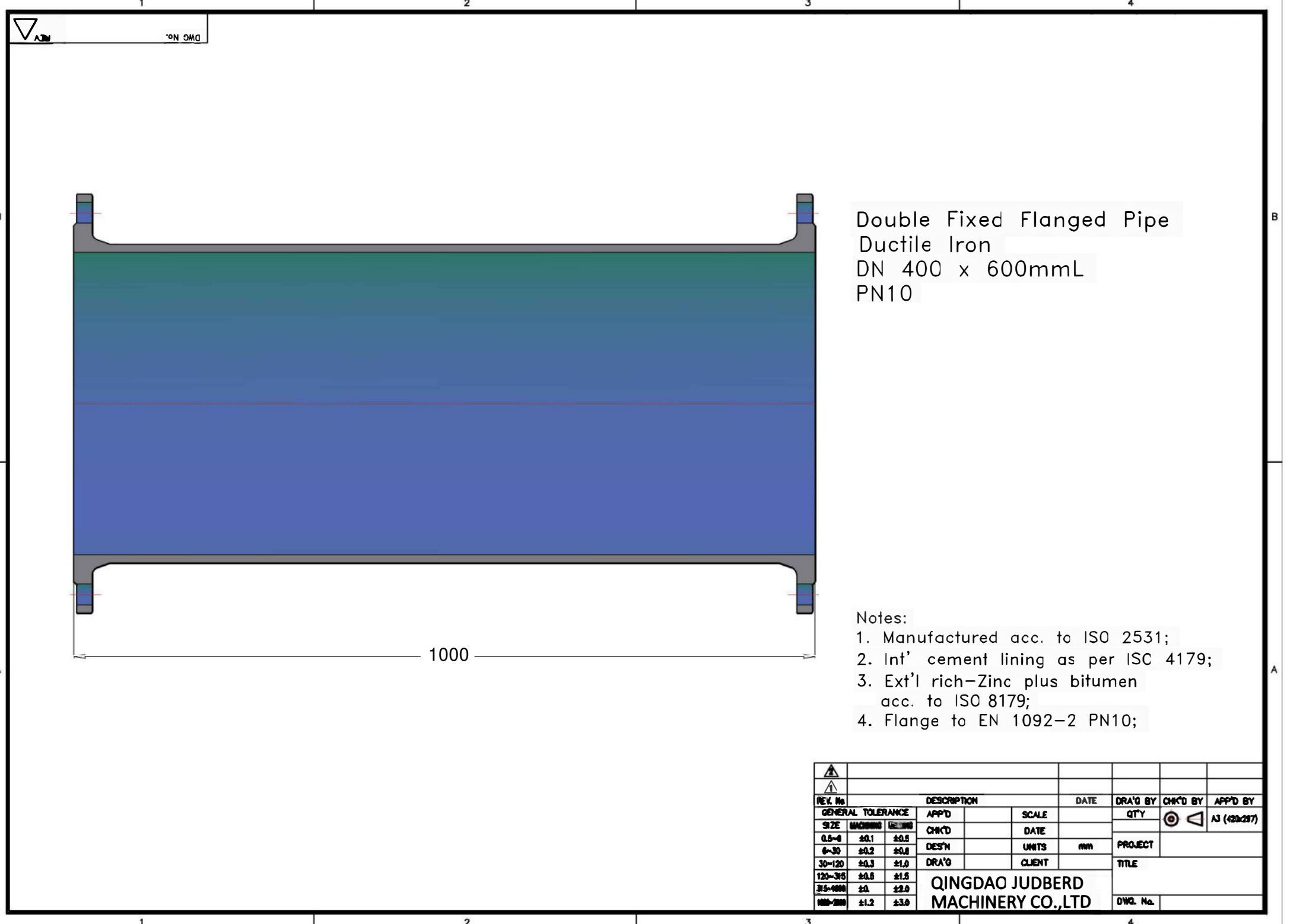


Double Fixed Flanged Pipe  
 Ductile Iron  
 DN 400 x 600mmL  
 PN10

Notes:

1. Manufactured acc. to ISO 2531;
2. Int'l cement lining as per ISO 4179;
3. Ext'l rich-Zinc plus bitumen as per ISO 8179;
4. Flange to EN 1092-2 PN10;

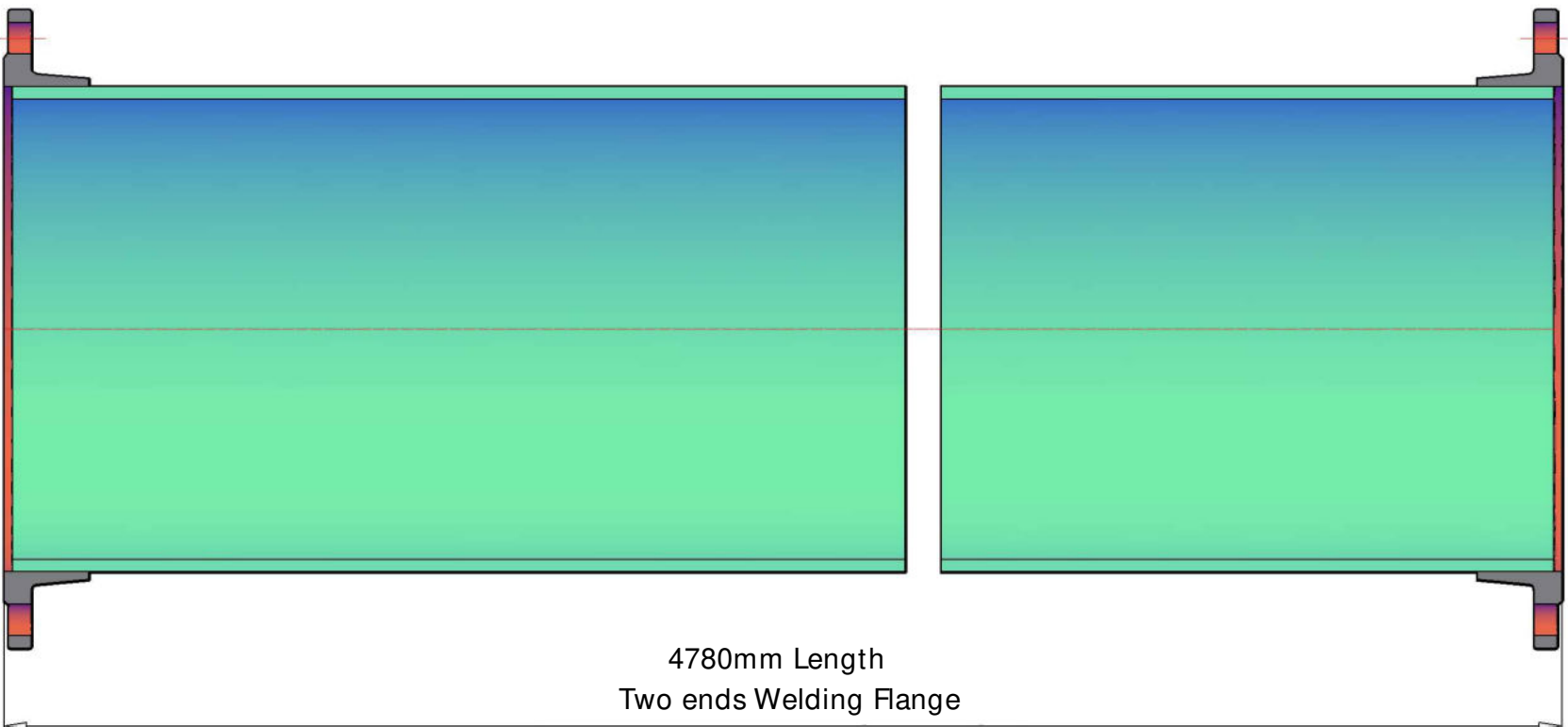
▲									
▲									
REV. No.	DESCRIPTION			DATE	DRA'G BY	CHK'D BY	APP'D BY		
GENERAL TOLERANCE		APP'D	SCALE		CITY	◎	△	A3 (420/297)	
SIZE	MACHINING	CHK'D	DATE		PROJECT				
0.5-6	±0.1 ±0.5	DES'N	UNITS	mm	TITLE				
6-30	±0.2 ±0.8	DRA'G	CLIENT		QINGDAO JUDBERD MACHINERY CO.,LTD				
30-120	±0.3 ±1.0				DWG. No.				
120-300	±0.6 ±1.5								
300-600	±1.0 ±2.0								
600-2000	±1.2 ±3.0								



Double Fixed Flanged Pipe  
 Ductile Iron  
 DN 400 x 600mmL  
 PN10

- Notes:
1. Manufactured acc. to ISO 2531;
  2. Int'l cement lining as per ISC 4179;
  3. Ext'l rich-Zinc plus bitumen acc. to ISO 8179;
  4. Flange to EN 1092-2 PN10;

REV. No.		DESCRIPTION		DATE	DRA'G BY	CHK'D BY	APP'D BY
GENERAL TOLERANCE		APP'D	SCALE		CITY	Q	AJ (420/217)
SIZE	MACHINING	GRINDING	CHK'D	DATE			
0.5-30	±0.1	±0.05	DES'N	UNITS	mm	PROJECT	
30-120	±0.2	±0.08	DRA'G	CLIENT		TITLE	
120-300	±0.3	±0.10	QINGDAO JUDBERD MACHINERY CO.,LTD			DWG. No.	
300-600	±0.4	±0.12					
600-2000	±0.5	±0.15					



4780mm Length  
Two ends Welding Flange

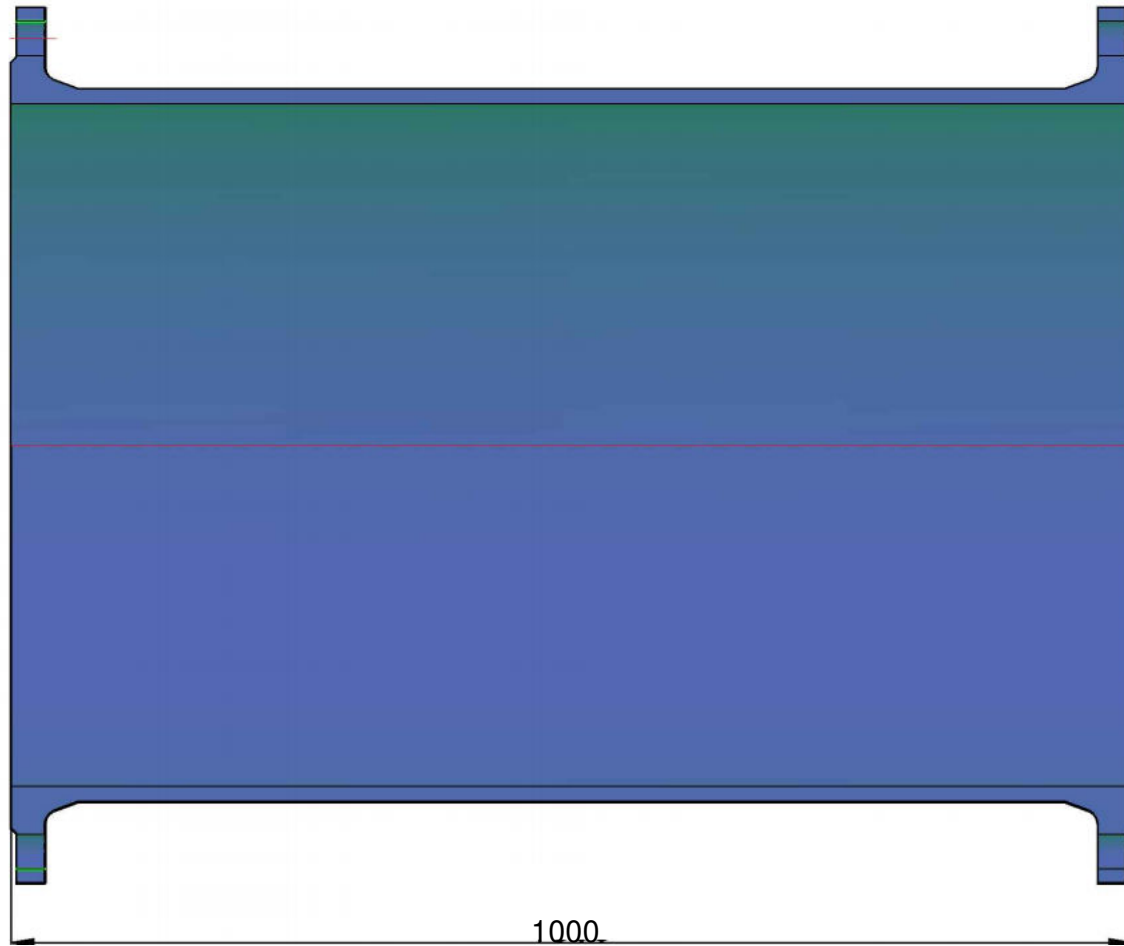
Double Flange Pipe by welding process  
DN400 x 4780mm Length PN10

- Notes:
- 1.Manufactured acc. to ISO 2531 or EN 545;
  - 2.Int'l cement lining as per ISO 4179;
  - 3.Ext'l rich-Zinc plus bitumen acc. to ISO 8179;
  - 4.Flange to EN 1092-2 PN10.

REV. No.		DESCRIPTION			DATE	DRA'G BY	CHK'D BY	APP'D BY
GENERAL TOLERANCE		APP'D	SCALE			QTY		
SIZE	MACHINING	CHK'D	DATE					AJ (400207)
0.5-6	±0.1 ±0.5	DES'N	UNITS	mm		PROJECT		
6-30	±0.2 ±0.8	DRA'G	CLIENT			TITLE		
30-120	±0.3 ±1.0							
120-315	±0.6 ±1.5	QINGDAO JUDBERD MACHINERY CO.,LTD						
315-1000	±0.8 ±2.0							
1000-2000	±1.2 ±3.0							
						DWG. No.		



DWG No.

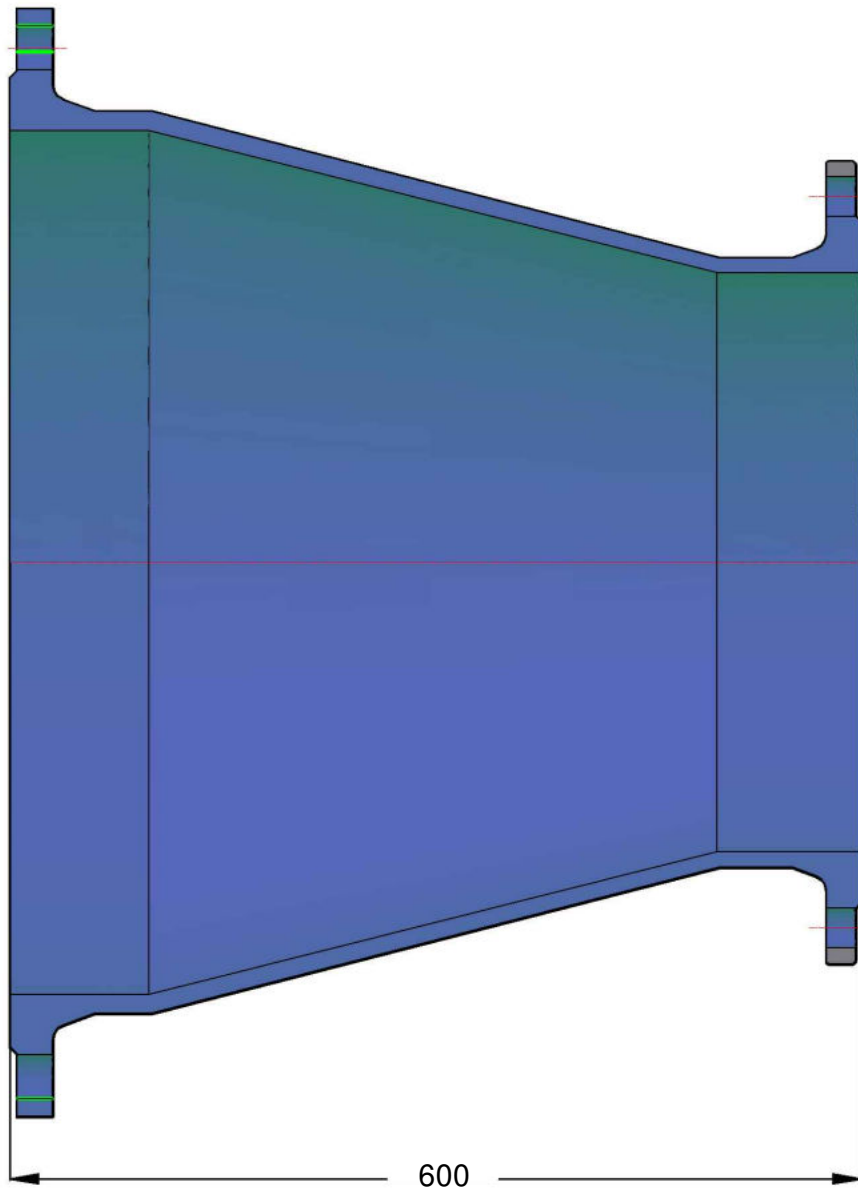


Double Fixed Flanged Pipe  
 Ductile Iron  
 DN 600 x 1000mmL  
 PN10

Notes:

1. Manufactured acc. to ISO 2531;
2. Int'l cement lining as per SO 4179;
3. Ext'l rich-Zinc plus bitumen as per ISO8179;
4. Flange to EN 1092-2 PN10;

REV. No.		DESCRIPTION		DATE	DRA'G BY	CHK'D BY	APP'D BY
GENERAL TOLERANCE		APP'D	SCALE		QTY	⊙	AS (48x287)
SIZE	MM	CHK'D	DATE				
0.5-6	±0.1	DES'N	UNITS	mm	PROJECT		
6-30	±0.2	DRA'G	CLIENT		TITLE		
30-120	±0.3	QINGDAO JUDBERD MACHINERY CO., LTD			DWG. No.		
120-300	±0.5						
300-1000	±0.8						
1000-2000	±1.2						



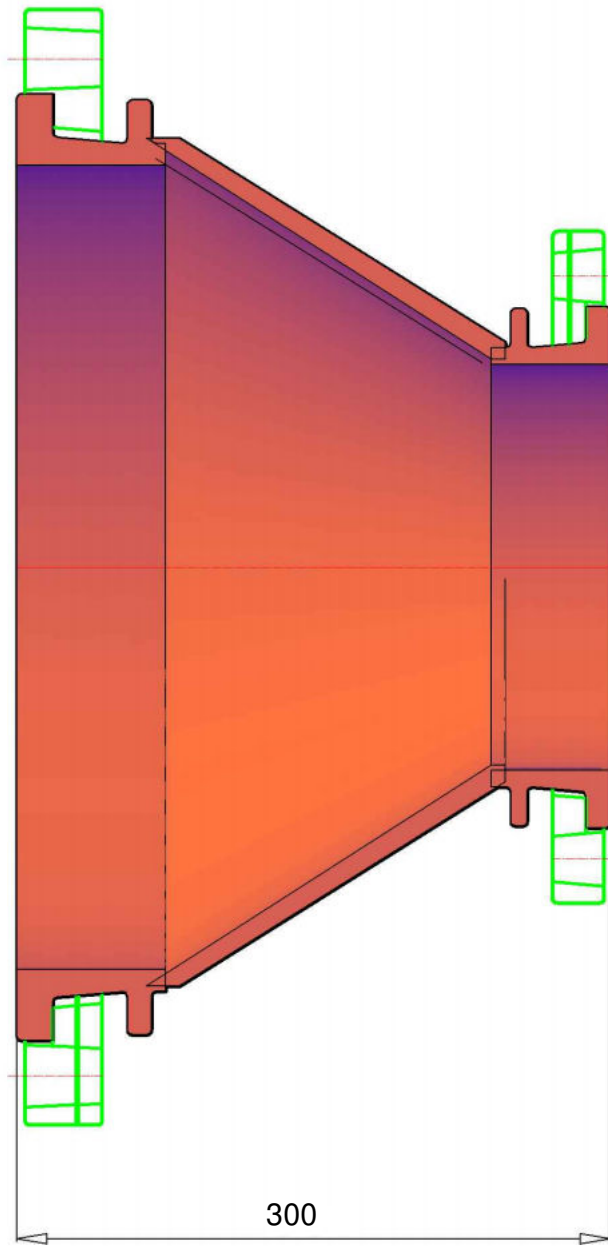
Double Fixed Flanged Taper  
 Ductile Iron  
 DN 600 x 400 x 600mmL  
 PN10

Notes:

1. Manufactured acc. to ISO 2531;
2. Int'l cement lining as per SC 4179;
3. Ext'l rich-Zinc plus bitumen as per ISO 8179;
4. Flange to EN 1092-2 PN10;

REV No.		DESCRIPTION			DATE	DRA'G BY	CHK'D BY	APP'D BY
GENERAL TOLERANCE		APP'D	SCALE			QTY	⊙	△ AJ (410/217)
SIZE	W/WORKING	CHK'D	DATE			PROJECT		
0.5-4	±0.1 ±0.5	DES'N	UNITS	mm		TITLE		
6-30	±0.2 ±0.8	DRA'G	CLIENT					
30-120	±0.3 ±1.0							
120-315	±0.5 ±1.5	QINGDAO JUDBERD MACHINERY CO.,LTD						
315-400	±0.8 ±2.0							
400-2000	±1.2 ±3.0							
						DWG No.		





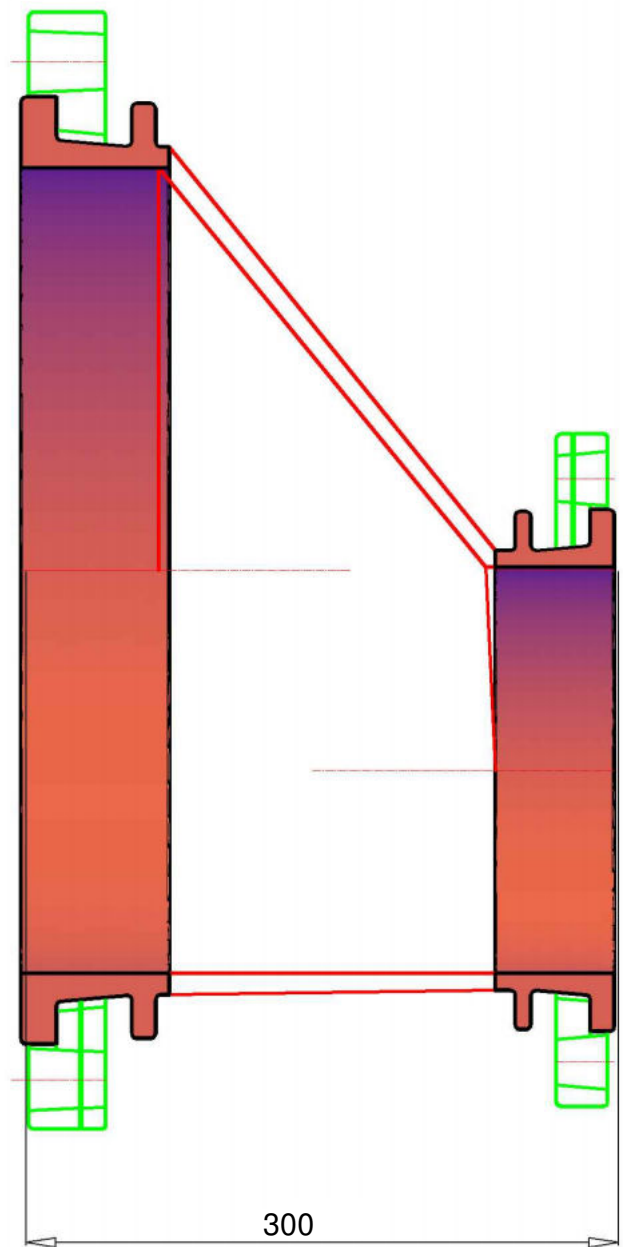
Double Loosing Flange Taper  
 DN400 x 200  
 PN10  
 Concentric Type

Notes:

- 1.Manufactured acc. to ISO 2531 or EN 545;
- 2.Int'l cement lining as per ISO4179;
- 3.Ext'l rich-Zinc plus bitumen acc. to ISO 8179;
- 4.Flange to EN 1092-2 PN10.

▲									
▲									
REV. No.	DESCRIPTION			DATE	DRA'G BY	CHK'D BY	APP'D BY		
GENERAL TOLERANCE		APP'D	SCALE		QTY	◎	◁	AS (420/207)	
SIZE	MACHINING	WELDING	CHK'D	DATE		PROJECT			
0.5-3	±0.1	±0.5	DES'N	UNITS	mm	TITLE			
3-30	±0.2	±0.8	DRA'G	CLIENT					
30-120	±0.3	±1.0							
120-315	±0.5	±1.5							
315-500	±0.8	±2.0							
500-1000	±1.2	±3.0							
<b>QINGDAO JUDBERD MACHINERY CO.,LTD</b>							DWG. No.		

REV. DWG No.



Double Loosing Flange Taper  
 DN400 x 200  
 PN10  
 Eccentric Type

- Notes:
- 1.Manufactured acc. to ISO 2531 or EN 545;
  - 2.Int'l cement lining as per ISO4179;
  - 3.Ext'l rich-Zinc plus bitumen acc. to ISO 8179;
  - 4.Flange to EN 1092-2 PN10.

REV. No.		DESCRIPTION		DATE	DRA'G BY	CHK'D BY	APP'D BY
GENERAL TOLERANCE		APP'D	SCALE		QTY	AS (420/297)	
SIZE	MACHINING	WELDING	CHK'D	DATE			
0.5-3	±0.1	±0.5	DES'N	UNITS	mm	PROJECT	
3-30	±0.2	±0.8	DRA'G	CLIENT		TITLE	
30-120	±0.3	±1.0					
120-315	±0.5	±1.5	QINGDAO JUDBERD MACHINERY CO.,LTD		DWG. No.		
315-630	±0.8	±2.0					
630-2000	±1.2	±3.0					