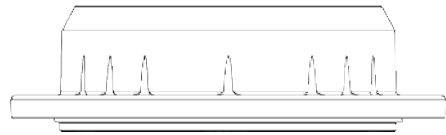
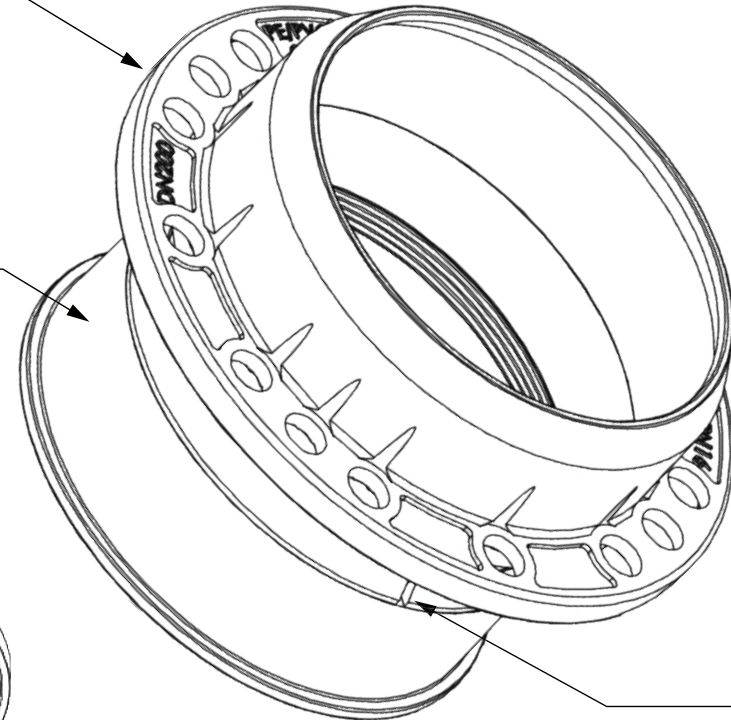


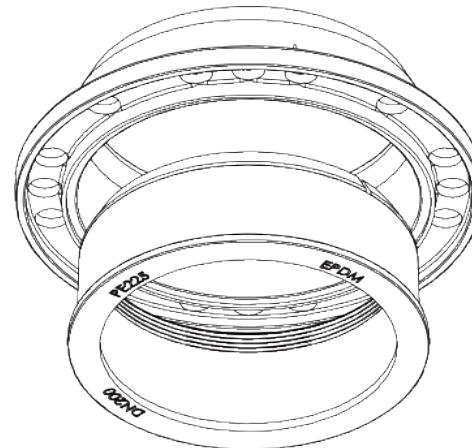
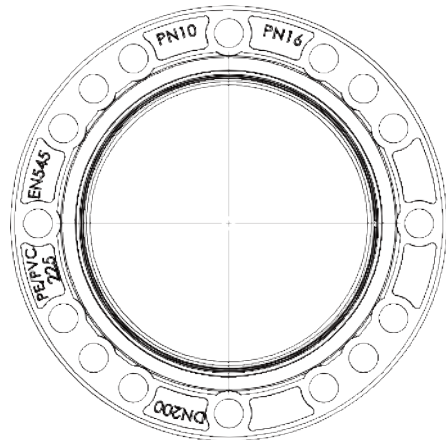
① DUCTILE IRON BODY  
 ACCORDING TO EN1563



③ EPDM GASKET  
 ACCORDING TO  
 EN681-1, SBR,NBR CAN  
 BE APPLICABLE



② BRASS GRIP RING  
 CW617N

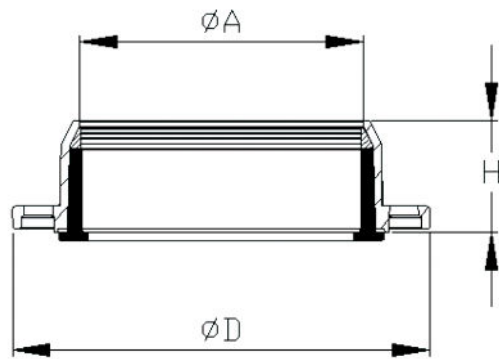


**PRECAUTIONS**

THIS QUICK FLANGE ADAPTOR IS DESIGNED FOR HDPE PIPE ONLY.  
 THIS QUICK FLANGE ADAPTOR CAN'T AFFORD HIGHER PRESSURE THAN 24 BAR.  
 FOR HIGHER PRESSURE THAN 24 BARS, PLEASE REFER TO OUR  
 RESTRAINED FLANGE ADAPTOR OR AQUA GRIP FLANGE ADAPTOR FOR HDPE PIPE.  
 PIPE STIFFENERS ARE RECOMMENDED TO BE USED

**SEE PAGE 2 FOR TECHNICAL SPECIFICATIONS.**

UNLESS OTHERWISE SPECIFIED: DIMENSIONS ARE IN MILLIMETERS SURFACE FINISH: TOLERANCES: LINEAR: ANGULAR:		FINISH:	DEBUR AND BREAK SHARP EDGES	DO NOT SCALE DRAWING	REVISION
DRAWN	NAME	SIGNATURE	DATE	TITLE: <b>QUICK FLANGE ADAPTOR FOR HDPE</b>	
CHK'D				MANUFACTURER QINGDAO JUDBERD MACHINERY CO LTD	
APP'VD				SCALE:	SHEET 2 OF 2
MFG				WEIGHT:	
Q.A					



SECTION A-A

FLANGE SIZE	PVC PIPE OUTSIDE DIAMETER	FLANGE OUTSIDE DIAMETER	BODY HEIGHT	SOCKET END INSIDE DIAMETER	APPX.WEIGHT (KGS)
DN	OD	D	H	A	
DN40/50	50	163	50	53	1.7
DN50/60/65	63	185	50	65	2.5
DN60/65	75	185	55	78	2.2
DN80	90	196	60	93	2.6
DN100	110	218	65	113	3.2
DN125	125	254	70	128	4.8
DN125	140	254	70	143	4.5
DN150	160	280	80	164	5.5
DN200	200	338	91	202.5	7.8
DN200	225	338	91	227.5	7.2
DN250	250	400	97	252.5	11.1
DN300	315	455	105	318	14.1
DN400	400	576	120	406	22.9

**NOTE**

DATA SUCH AS THE ABOVE IS BASED ON OUR MOST ACCURATE AT THE TIME OF OUR RELEASE, BUT WE MAY MAKE UPDATES OR IMPROVEMENTS TO OUR PRODUCTS, SO IF YOU NEED THE LATEST, PLEASE CONTACT US.

UNLESS OTHERWISE SPECIFIED: DIMENSIONS ARE IN MILLIMETERS				FINISH:		DEBUR AND BREAK SHARP EDGES		DO NOT SCALE DRAWING		REVISION	
SURFACE FINISH:											
TOLERANCES:											
LINEAR:											
LINEAR:											
ANGULAR:											
DRAWN		SIGNATURE		DATE						TITLE:	
CHK'D										<b>QUICK FLANGE ADAPTOR FOR HDPE</b>	
APP'VD										MANUFACTURER	
MFG										QINGDAO JUDBERD MACHINERY CO LTD	
Q.A						MATERIAL:				SCALE:	
										SHEET 2 OF 2	
						WEIGHT:					