

① PLASTIC CAP
(PROTECT BOLTS THREAD)

③ CS OR SS WASHER
(DAROMET THICKNESS
8-10UM, HOT DIP GALVA-
NIZATION 30-40UM,TEF-
LON COATING)

② CS OR SS NUT
(DAROMET THICKNESS
8-10UM, HOT DIP GALVA-
NIZATION 30-40UM,
TEFLON COATING)

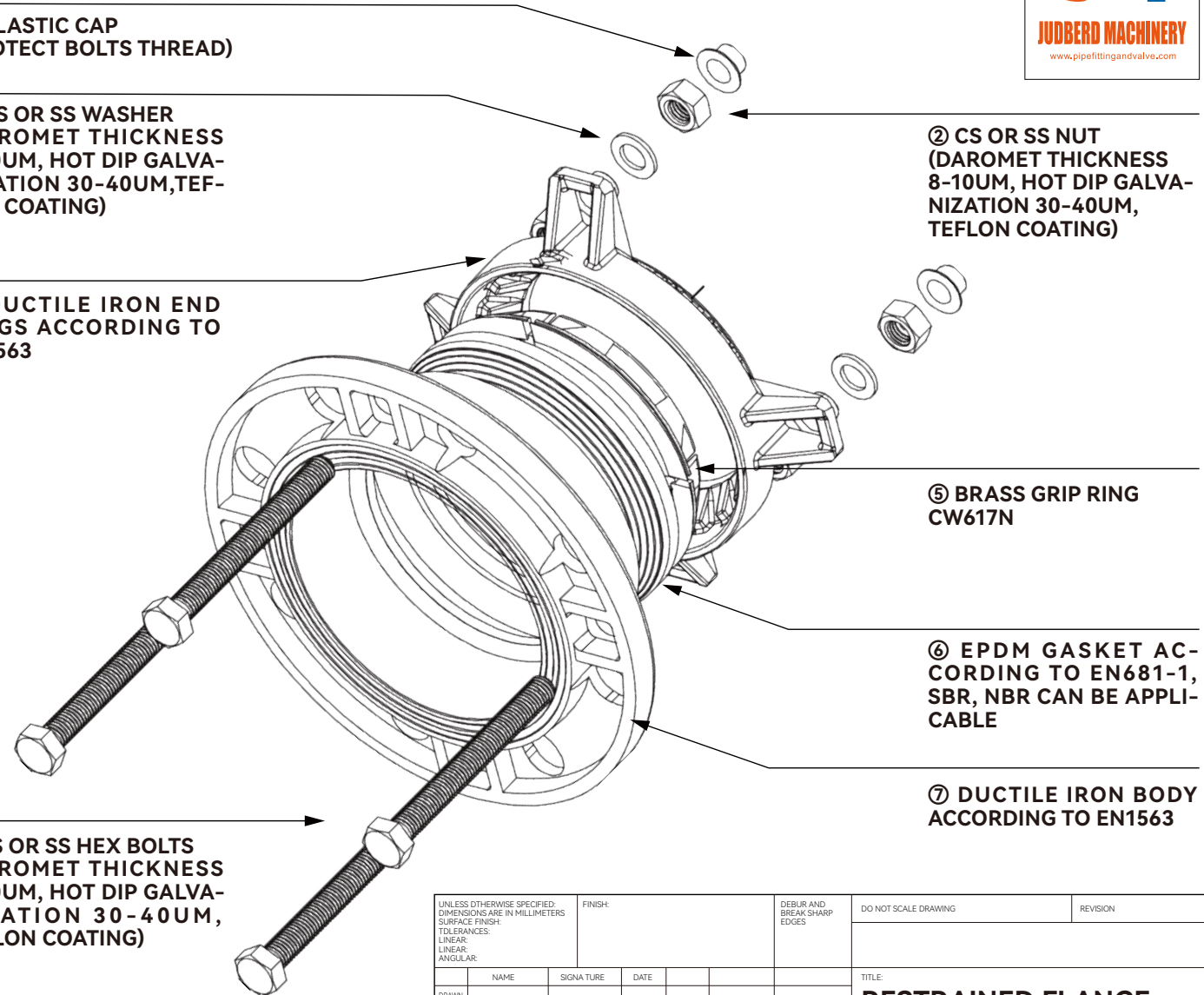
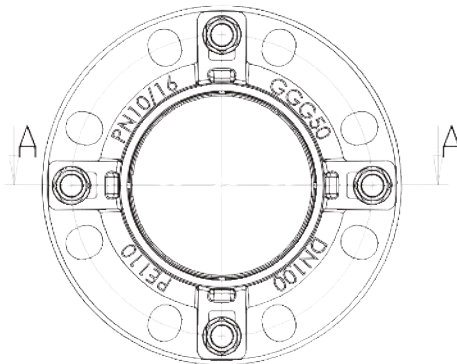
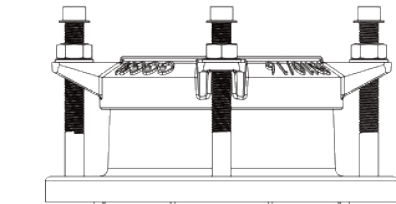
④ DUCTILE IRON END
RINGS ACCORDING TO
EN1563

⑤ BRASS GRIP RING
CW617N

⑥ EPDM GASKET AC-
CORDING TO EN681-1,
SBR, NBR CAN BE APPLI-
CABLE

⑦ DUCTILE IRON BODY
ACCORDING TO EN1563

⑧ CS OR SS HEX BOLTS
(DAROMET THICKNESS
8-10UM, HOT DIP GALVA-
NIZATION 30-40UM,
TEFLON COATING)

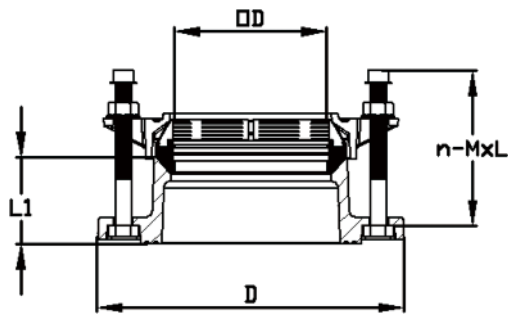


PRECAUTIONS

THIS RESTRAINED FLANGE ADAPTOR IS DESIGNED FOR HDPE PIPE.
 WITH GRIP RINGS TO AVOID PIPES TO BE PULLED OUT,
 PIPE STIFFENERS ARE RECOMMENDED TO BE USED

SEE PAGE 2 FOR TECHNICAL SPECIFICATIONS.

UNLESS OTHERWISE SPECIFIED: DIMENSIONS ARE IN MILLIMETERS SURFACE FINISH: TOLERANCES: LINEAR: ANGULAR:			FINISH:	DEBUR AND BREAK SHARP EDGES	DO NOT SCALE DRAWING	REVISION
NAME	SIGNATURE	DATE				
DRAWN						
CHK'D						
APP'VD						
MFG						
Q.A				MATERIAL:		
				WEIGHT:		
TITLE: RESTRAINED FLANGE ADAPTOR					MANUFACTURER QINGDAO JUDBERD MACHINERY CO LTD	
SCALE:					SHEET 2 OF 2	



SECTION A-A

FLANGE SIZE	PE PIPE OUTSIDE DIAMETER	FLANGE OUTSIDE DIAMETER	FLANGE BODY HEIGHT	BOLTS NO-BOLTS SIZExBOLTS LENGTH	BOLTS TYPE	MAX PRESSURE (BAR)	MAX DEFLECTION (DEGREES)	APPX.WEIGHT(KGS)
DN	OD	D	L1	n-MxL				
DN50	63	160	63	2-M12x110	HEX. BOLTS	25	±3°	2.8
DN60/65	75	185	63	2-M12x110	HEX. BOLTS	25	±3°	3.3
DN80	90	200	63	4-M12x110	HEX. BOLTS	25	±3°	4.1
DN100	110	220	63	4-M12x110	HEX. BOLTS	25	±3°	4.7
DN125	125	245	63	4-M12x110	HEX. BOLTS	25	±3°	5.9
DN125	140	245	63	4-M12x110	HEX. BOLTS	25	±3°	6.0
DN150	160	285	65	4-M12x110	HEX. BOLTS	25	±3°	6.9
DN150	180	285	65	4-M12x110	HEX. BOLTS	25	±3°	7.0
DN200	200	340	75	4-M12x120	HEX. BOLTS	25	±3°	9.9
DN200	225	340	75	4-M12x120	HEX. BOLTS	25	±3°	8.8
DN250	250	400	75	6-M12x120	HEX. BOLTS	25	±3°	13.5
DN250	280	400	75	6-M12x120	HEX. BOLTS	25	±3°	12.8
DN300	315	455	85	6-M12x130	HEX. BOLTS	25	±3°	16.7

NOTE

DATA SUCH AS THE ABOVE IS BASED ON OUR MOST ACCURATE AT THE TIME OF OUR RELEASE, BUT WE MAY MAKE UPDATES OR IMPROVEMENTS TO OUR PRODUCTS, SO IF YOU NEED THE LATEST, PLEASE CONTACT US.

UNLESS OTHERWISE SPECIFIED: DIMENSIONS ARE IN MILLIMETERS				FINISH:		DEBUR AND BREAK SHARP EDGES		DO NOT SCALE DRAWING		REVISION	
SURFACE FINISH:											
TOLERANCES:											
LINEAR:											
ANGULAR:											
DRAWN		SIGNATURE		DATE						TITLE:	
CHK'D										RESTRAINED FLANGE ADAPTOR	
APP'VD										MANUFACTURER	
MFG										QINGDAO JUDBERD MACHINERY CO LTD	
Q.A						MATERIAL:				SCALE:	
										SHEET 2 OF 2	
						WEIGHT:					