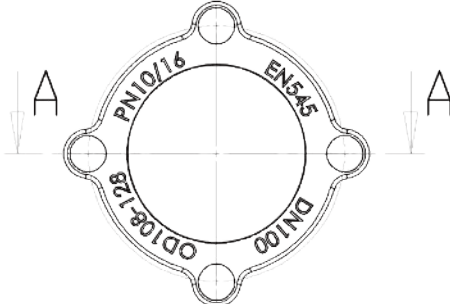
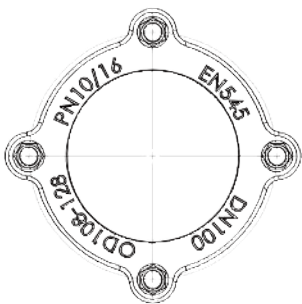
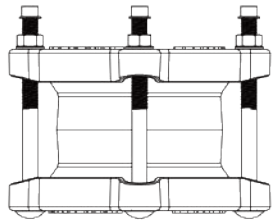
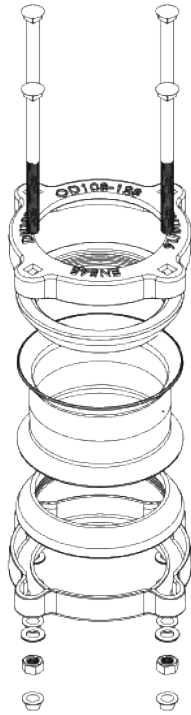
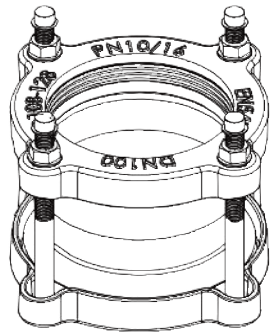


UNIVERSAL COUPLING

QINGDAO JUDBERD MACHINERY CO LTD
0086-153-1552-2185



② CS OR SS NUT
(DAROMET THICKNESS
8-10UM, HOT DIP GALVA-
NIZATION 30-40UM,
TEFLON COATING)

③ CS OR SS WASHER
(DAROMET THICKNESS
8-10UM, HOT DIP
GALVANIZATION 30-40UM,
TEFLON COATING)

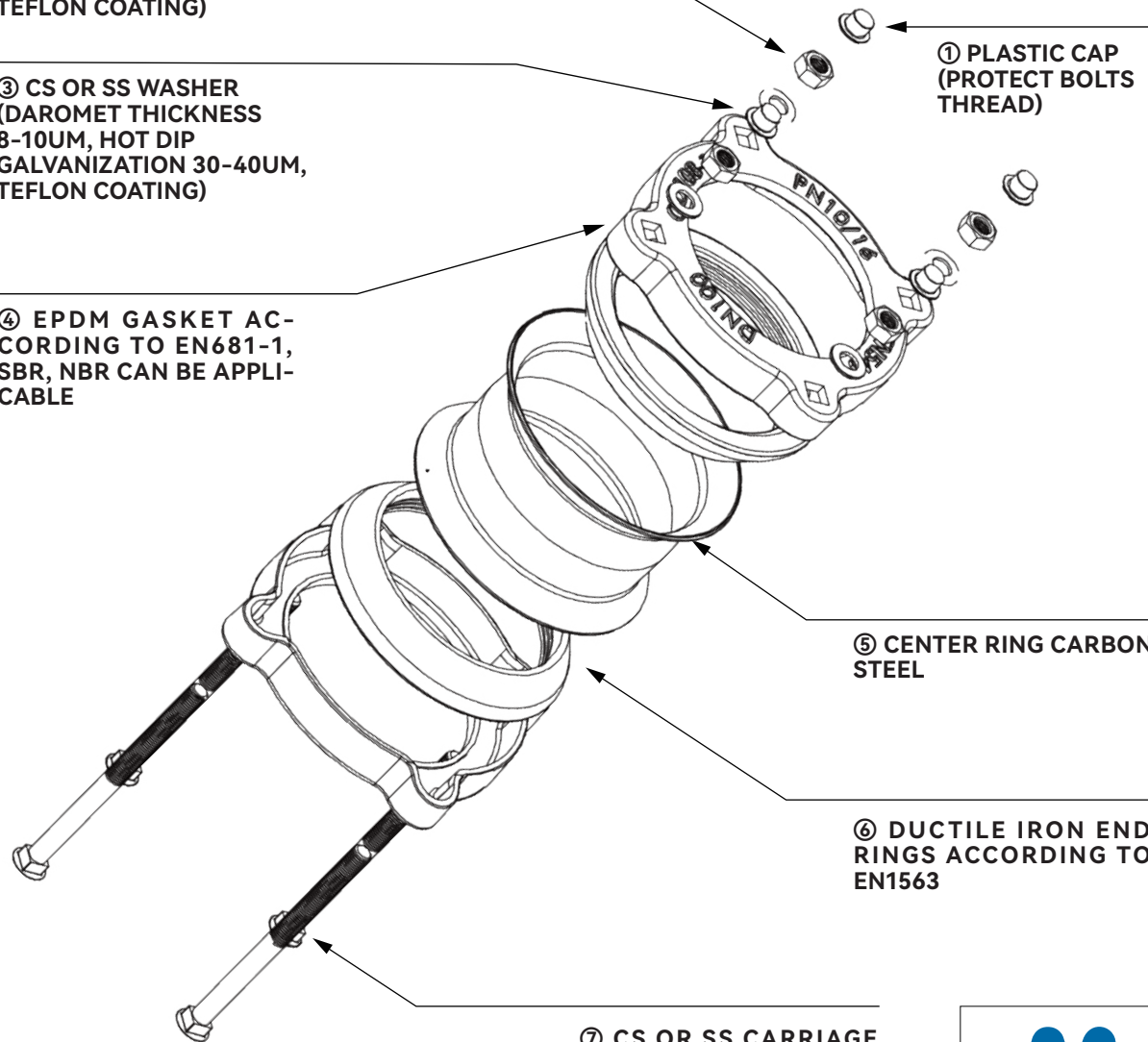
④ EPDM GASKET AC-
CORDING TO EN681-1,
SBR, NBR CAN BE APPLI-
CABLE

① PLASTIC CAP
(PROTECT BOLTS
THREAD)

⑤ CENTER RING CARBON
STEEL

⑥ DUCTILE IRON END
RINGS ACCORDING TO
EN1563

⑦ CS OR SS CARRIAGE
BOLTS(DAROMET THICK-
NESS 8-10UM,HOT DIP
GALVANIZATION
30-40UM, TEFLON COAT-
ING)



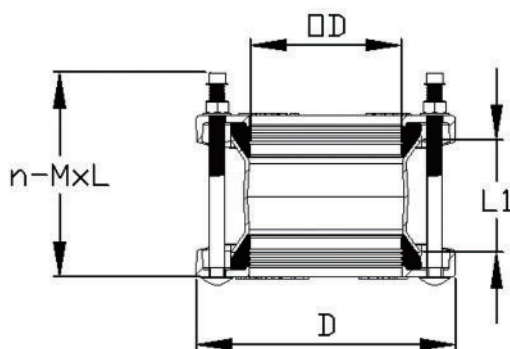
PRECAUTIONS

THIS UNIVERSAL COUPLING CAN'T ACCOMMODATES TO HDPE PIPES,
WITHOUT GRIP RINGS TO AVOID PIPES TO BE PULLED OUT,
IF YOU NEED RESTRAINED TYPE, PLEASE REFER TO OUR RESTRAINED COUPLING,
SEE PAGE 2 FOR TECHNICAL SPECIFICATIONS.



UNIVERSAL COUPLING

QINGDAO JUDBERD MACHINERY CO LTD
0086-153-1552-2185



SIZE	WORKING PRESSURE (BARS)	PIPE OUSTIDE DIAMETER	END RING OUTSIDE DIAMETER	CENTER RING LENGTH	BOLTS NUMBER-BOLTS SIZEXBOLTS LENGTH	BOLTS TYPE	MAXIMUM ALLOWABLE PRESSURE (bar)	MAXIMUM EACH SIDE ALLOWABLE DEFLECTION (DEGREES)	APPX.WEIGHT(KGS)
NOMINAL DIAMETER		OD	D	L1	n-MxL				
DN40	PN10/16	48-60	155	95	2-M12x170	CARRIAGE BOLTS	25	±3°	2.45
DN50	PN10/16	59-72	165	95	2-M12x170	CARRIAGE BOLTS	25	±3°	2.43
DN50	PN10/16	59-78	168	95	4-M12x170	CARRIAGE BOLTS	25	±3°	2.7
DN65	PN10/16	72-85	180	95	2-M12x170	CARRIAGE BOLTS	25	±3°	2.83
DN80	PN10/16	88-103	185	95	4-M12x170	CARRIAGE BOLTS	25	±3°	3.78
DN100	PN10/16	98-118	208	95	4-M12x170	CARRIAGE BOLTS	25	±3°	4.62
DN100	PN10/16	108-128	225	95	4-M12x180	CARRIAGE BOLTS	25	±3°	4.7
DN125	PN10/16	132-153	250	95	4-M12x180	CARRIAGE BOLTS	25	±3°	5.95
DN150	PN10/16	150-170	261	105	4-M12x180	CARRIAGE BOLTS	25	±3°	6.1
DN150	PN10/16	159-182	275	110	4-M12x190	CARRIAGE BOLTS	25	±3°	6.84
DN200	PN10/16	190-210	305	130	4-M12x210	CARRIAGE BOLTS	25	±3°	7.6
DN200	PN10/16	218-235	315	130	4-M12x210	CARRIAGE BOLTS	25	±3°	9.17
DN250	PN10/16	242-267	350	130	6-M12x220	CARRIAGE BOLTS	25	±3°	12.9
DN250	PN10/16	272-289	395	130	6-M12x220	CARRIAGE BOLTS	25	±3°	13.2
DN300	PN10/16	315-332	450	130	6-M12x220	CARRIAGE BOLTS	25	±3°	15.9
DN300	PN10/16	322-339	460	130	6-M12x220	CARRIAGE BOLTS	25	±3°	16.3
DN300	PN10/16	340-360	460	130	6-M14x230	CARRIAGE BOLTS	25	±3°	19.9
DN350	PN10/16	351-378	510	130	8-M14x230	CARRIAGE BOLTS	25	±3°	23.1
DN350	PN10/16	374-391	520	130	8-M14x230	CARRIAGE BOLTS	25	±3°	23.9
DN350	PN10/16	386-410	524	130	8-M14x230	CARRIAGE BOLTS	25	±3°	24.2
DN400	PN10/16	417-437	556	130	8-M14x230	CARRIAGE BOLTS	25	±3°	24.1
DN450	PN10/16	438-458	594	130	10-M14x230	CARRIAGE BOLTS	25	±3°	28.5
DN450	PN10/16	476-493	615	130	10-M14x230	CARRIAGE BOLTS	25	±3°	29.8
DN500	PN10/16	500-516	623	130	10-M14x230	CARRIAGE BOLTS	25	±3°	33.5
DN500	PN10/16	500-532	667	150	10-M14x250	CARRIAGE BOLTS	25	±3°	36.6
DN500	PN10/16	526-546	666	150	10-M14x250	CARRIAGE BOLTS	25	±3°	37.3
DN500	PN10/16	540-570	686	150	10-M14x250	CARRIAGE BOLTS	25	±3°	42
DN600	PN10/16	580-605	746	150	10-M14x250	CARRIAGE BOLTS	25	±3°	45
DN600	PN10/16	600-630	745	150	10-M14x250	CARRIAGE BOLTS	25	±3°	46.5
DN600	PN10/16	630-650	770	150	10-M14x250	CARRIAGE BOLTS	25	±3°	47
DN700	PN10/16	720-738	867	160	12-M14x260	CARRIAGE BOLTS	25	±3°	60
DN700	PN10/16	730-745	874	160	12-M14x260	CARRIAGE BOLTS	25	±3°	62
DN800	PN10/16	820-842	988	160	12-M16x270	CARRIAGE BOLTS	25	±3°	80

NOTE

DATA SUCH AS THE ABOVE IS BASED ON OUR MOST ACCURATE AT THE TIME OF OUR RELEASE, BUT WE MAY MAKE UPDATES OR IMPROVEMENTS TO OUR PRODUCTS, SO IF YOU NEED THE LATEST, PLEASE CONTACT US.

