

# JUDBERD MACHINERY



## DI SADDLE CLAMP FOR PVC AND HDPE PIPE WITH METRIC THREAD STYLE DSCPVCPEMT001

**FROM OD63 TO OD160 PN10/16, WITH M40 AND M55 THREAD OUTLET**

BIGGER SIZE AND HIGHER PRESSURE ARE ALSO AVAILABLE , PLEASE CONSULT JUDBERD.



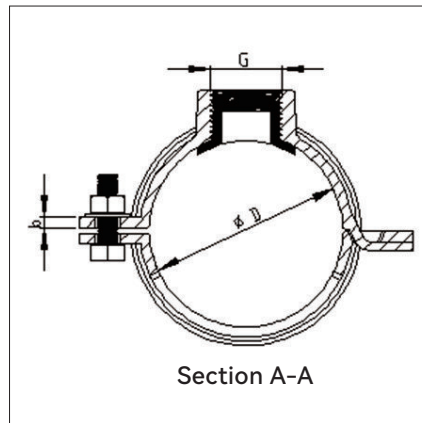
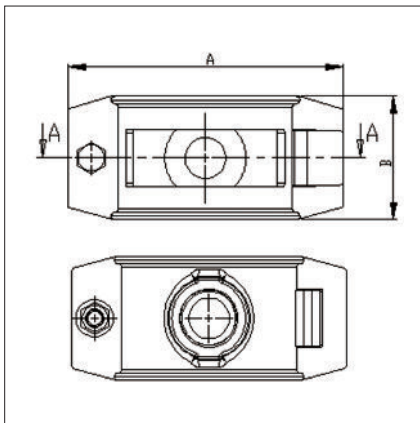
**2 YEARS/5 YEARS/10 YEARS WARRANTY**  
ACCORDING TO DIFFERENT MATERIAL CHOICE



**30 YEARS EXPERIENCE**



**CERTIFIED TO WRAS AND ACS**



| Size  | ØD  | G     | A   | B  | b |
|-------|-----|-------|-----|----|---|
| 63PB  | 63  | M40x3 | 140 | 85 | 6 |
| 63GB  | 63  | M55x3 | 140 | 95 | 6 |
| 75PB  | 75  | M40x3 | 155 | 85 | 6 |
| 75GB  | 75  | M55x3 | 155 | 95 | 6 |
| 90PB  | 90  | M40x3 | 170 | 85 | 6 |
| 90GB  | 90  | M55x3 | 170 | 95 | 6 |
| 110PB | 110 | M40x3 | 190 | 85 | 7 |
| 110GB | 110 | M55x3 | 190 | 95 | 7 |
| 160PB | 160 | M40x3 | 240 | 85 | 7 |
| 160GB | 160 | M55x3 | 240 | 95 | 7 |

- 1, Outlet thread must be metric thread, without sealing function.
- 2, When installing the isolation valve, the bottom of the isolation valve's thread presses against the sealing surface of the saddle clamp's rubber gasket to create a seal.
- 3, Please note that this metric thread saddle clamp can only be connected with isolation valves that have the same metric thread. It cannot be used with isolation valves that have other thread standards.
- 4, In addition to the outlet sizes listed in the table, we can also provide larger outlet sizes. However, this requires special design adjustments and mold modifications.

DI SADDLE CLAMP FOR PVC AND HDPE PIPE WITH METRIC THREAD STYLE DSCPVCPEMT001

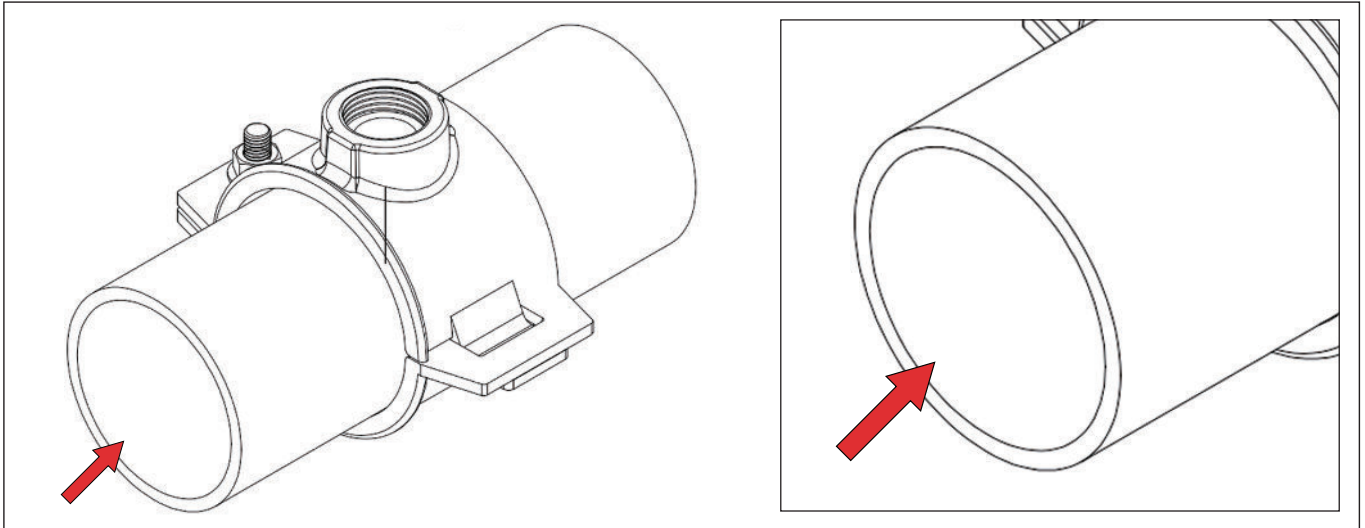
# JUDBERD MACHINERY



## DI SADDLE CLAMP FOR PVC AND HDPE PIPE WITH METRIC THREAD STYLE DSCPVCPEMT001

DI SADDLE CLAMP FOR PVC AND HDPE PIPE WITH METRIC THREAD STYLE DSCPVCPEMT001

### PIPE COMPATIBILITY



HDPE PIPE AND PVC PIPE

Isolation valve can be any valve with a shut-off function, such as a gate valve, ball valve, or service valve. However, it is essential to ensure that thread on the valve match the standard and size of the metric female threads on the outlet of the saddle clamp.

The key dimensions of a saddle clamp consist of two parts: 1st is the outer diameter of the main pipe (as shown in Figure 1), 2nd is the standard and size of the threaded outlet for the branch (as shown in Figure 2).

